

Nikon

En

# Quick Start Guide

## COOLPIX5000 DIGITAL CAMERA



Read this guide for a quick introduction to the COOLPIX5000. The steps that follow take you from setting up your camera to taking and viewing your first photos.

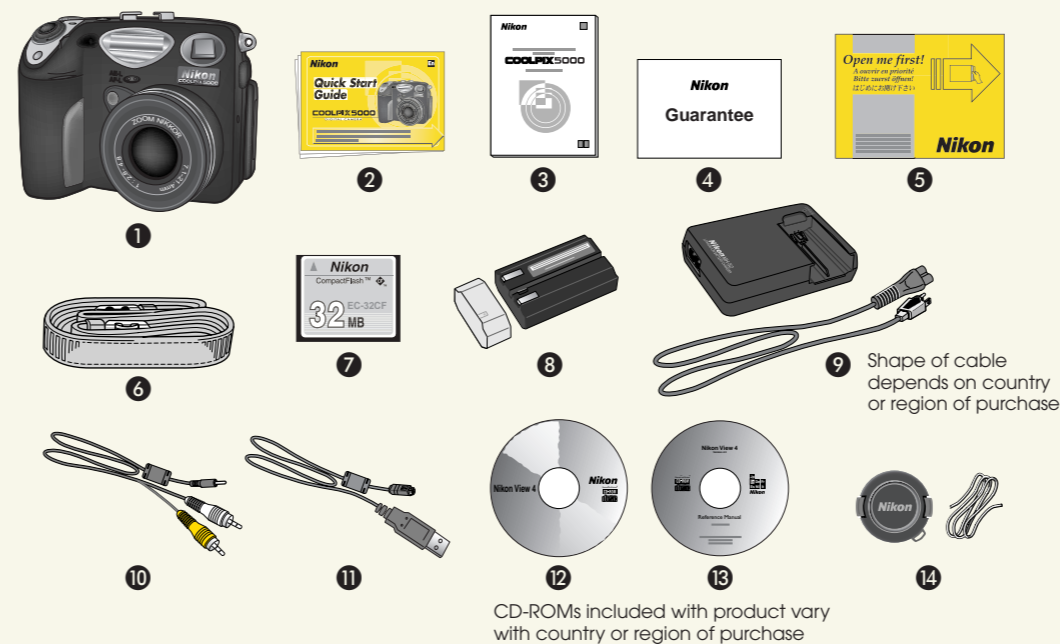
### Start

## Step 1

### Unpack the camera

Take the camera and accessories out of the box. Check that you have all the items listed below.

- 1 COOLPIX5000 digital camera
- 2 Quick Start Guide (this guide)
- 3 Guide to Digital Photography
- 4 Guarantee
- 5 "Open me first!" envelope
- 6 Camera strap
- 7 CompactFlash™ memory card
- 8 Rechargeable EN-EL1 battery with terminal cover
- 9 MH-52 battery charger
- 10 Audio/video cable
- 11 USB interface cable
- 12 Nikon View 4 CD-ROM
- 13 Nikon View 4 Reference Manual CD-ROM
- 14 Lens cap and cap string



## Step 2

### Charge the battery

- 1 Connect the supplied power cable to the MH-52 battery charger and plug the charger into the AC power source. Charging will begin when the EN-EL1 rechargeable battery is inserted.
  - Enlarged view of terminals (Reverse view)
  - Insert in direction of arrow
- 2 The red CHARGE lamp on the charger will glow while the battery charges. Charging is complete when the CHARGE lamp turns off.
  - \* An exhausted battery can be fully recharged in approximately 2 hours.

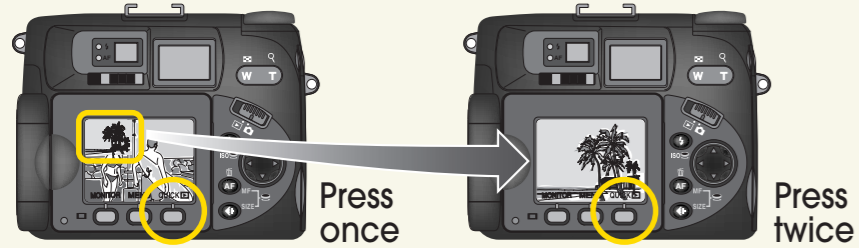
## Step 5

### Check the results

The QUICK [ ] (Quick Review) button next to the monitor is used to review photos after shooting.



- 1 Press the QUICK [ ] button.



Press QUICK [ ] button once to display photos in top left corner of monitor, twice to view photos full screen.

- 2 Press the multi selector down (▼) to view photos in order, or up (▲) to view photos in reverse order.

To end review and focus the camera for your next shot, press the shutter-release button halfway.



- 3 When you have finished taking pictures, turn the camera off. This completes our overview of basic camera operations.

For information on viewing your photos on a television or computer, see the reverse side of this sheet. To make the most of all the features of your Nikon digital camera, be sure to read the Guide to Digital Photography.

### Parts of the COOLPIX5000

- Command dial**: Use by itself or in combination with other buttons to adjust camera settings (pg.13).
- Built-in Speedlight**: Your camera's built-in flash (pg.82).
- Built-in microphone\***: Records sound when you make movies (pg.109).
- Memory card-slot cover**: Opening the cover reveals the slot where you insert memory cards (pg.36).
- Power switch/shutter-release button**: The shutter-release button is on the power switch (pg.12).
- Zoom button**: Use to adjust the lens focal length from wide angle (W) to telephoto (T), or to zoom in on photos during playback (pp.13, 69).
- Mode selector**: Switch between shooting and playback modes (pg.12).
- Multi selector**: Use for navigating the menus and selecting photos for viewing during playback (pg.18).
- Battery-chamber cover/battery-chamber lock**: Open the cover to insert the battery (pg.34).
- MONITOR button**: Turns the monitor on and off (pp.18, 47).
- QUICK [ ] button**: Use to display photos after shooting (pp.19, 56).
- MENU button**: Press to display camera menus (pp.19, 21).
- Vari-angle monitor**: Monitor can be rotated through 270° to frame shots at different angles (Step 4-This guide).
- Built-in speaker\***: Used for audio playback when you view movies (pg.164).

Other Camera Controls	
<b>FUNC Button</b>	Set the Func. button as desired to control frequently used settings (pg.15).
<b>MODE Button</b>	Press while turning command dial to select one of four exposure modes (pg.15).
<b>ISO Button</b>	Press while turning command dial to alter default exposure value (pg.15).
<b>ISO/AF Button</b>	Use to change the flash setting, or use together with command dial to set ISO value (pg.16).
<b>AF/MF Button</b>	Press to select focus mode, press while turning command dial to set focus distance. Can also be used to delete unwanted images (pg.16).
<b>SIZE Button</b>	Use to set image quality, or together with command dial to set image size (pg.17).

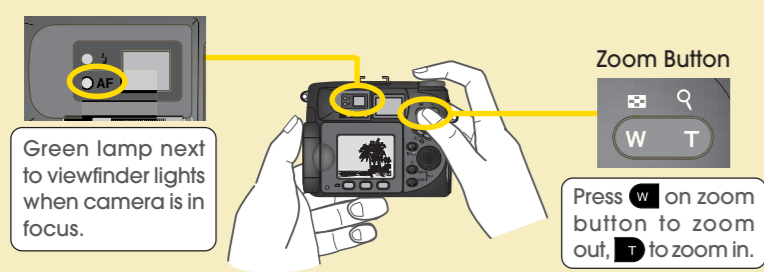
**Note** \* About the Built-in Microphone and Speaker  
The COOLPIX5000 can record movies up to sixty seconds in length (pg.109). Sound is automatically recorded with the built-in microphone when you make a movie, and played back over the built-in speaker when the movie is viewed.

## Step 3

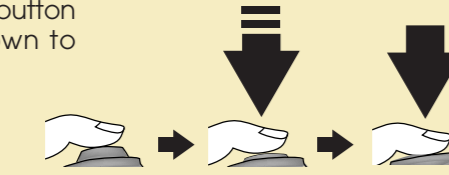
### Ready the camera

- 1 Attach the strap to both sides of the camera as shown.
  - When you insert a battery for the first time or after the camera has been left unused for an extended period, the lens will extend even if the camera is off.
- 2 After checking that the camera is off and that the lens cap has been removed, slide the battery-chamber cover latch ( ) on the bottom of the camera to the open position ( ) and open the battery-chamber cover as shown at right.
  - Insert the EN-EL1 rechargeable battery, then close the battery-chamber cover and return the latch to the locked position ( ), as shown right.
- 3 Insert the memory card with the Nikon CompactFlash™ label facing the front of the camera (the side with the lens). Make sure to insert the edge with the contact points (two rows of small holes) into the camera.
  - The memory card provided with your camera is formatted at shipment. Other memory cards must however be formatted before first use. See the Guide to Digital Photography, pages 37-38.
- 4 Open the memory card slot cover on the side of the camera and press the eject button down, then slide the memory card into place. Once the card is fully inserted, close the card slot cover.
  - Press button down before inserting card.

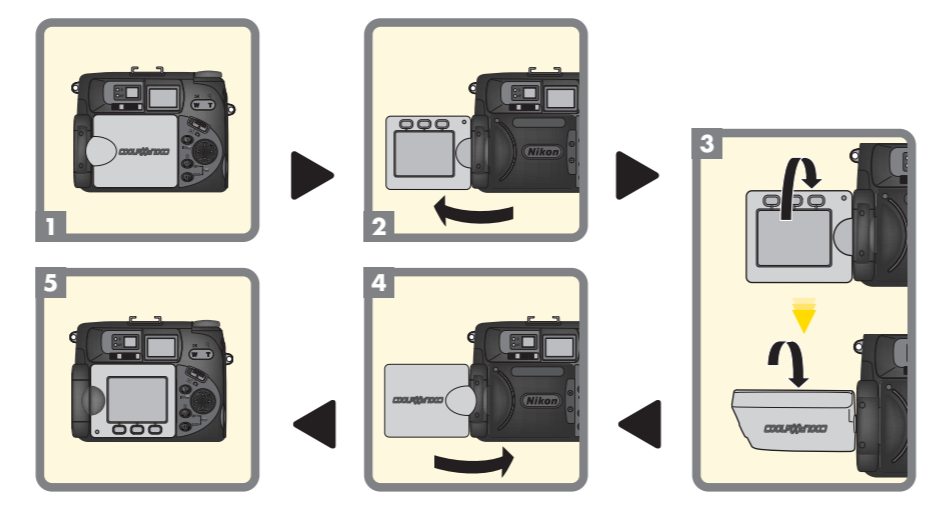
- 3 After framing your photograph in the monitor or viewfinder, press the shutter-release button halfway and check that the camera is in focus.



- 4 Press the shutter-release button the rest of the way down to take the photograph.



### Using the vari-angle monitor



## Step 4

### Take photographs

- 1 Slide the mode selector on the rear of the camera to (shooting mode) and check that the camera is on.
  - 2 Open the monitor.
- Note** The first time you use the camera, the date and time will not be set, and a flashing clock icon ( ) will appear in the monitor. For more information, see the Guide to Digital Photography, pages 42-43.

**Important** Insert the memory card with the Nikon CompactFlash™ label facing the front of the camera (the side with the lens). Make sure to insert the edge with the contact points (two rows of small holes) into the camera.

**Note** The memory card provided with your camera is formatted at shipment. Other memory cards must however be formatted before first use. See the Guide to Digital Photography, pages 37-38.

**5** Turn the camera on and check the battery level indicator in the control panel.

**Important** When the camera is turned on in shooting mode ( ), the lens will extend. If the lens starts to extend when the lens cap is still in place, an error message will appear in the monitor. Turn the camera off and remove the lens cap before turning the camera on again.

Battery level is shown in the control panel as follows:

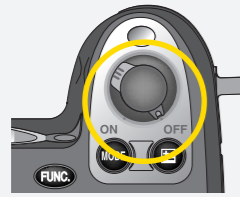
- ( ) Battery fully charged.
- ( ) Low battery. If possible, ready a fully charged spare battery.
- ( ) Battery exhausted. No photos can be taken until the battery has been recharged or replaced.

# Viewing your pictures

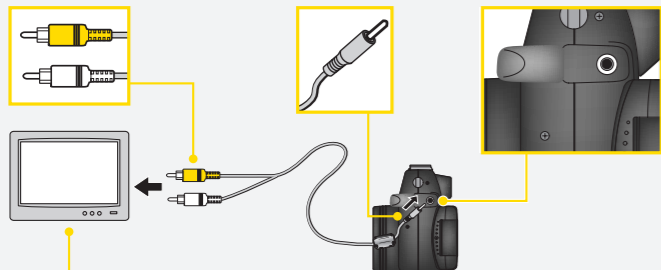
Transfer to computer

View on TV

1 Turn the camera off.

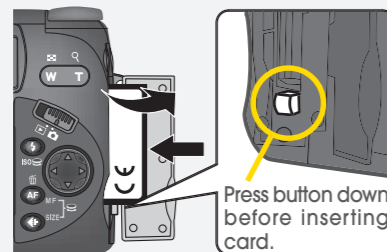


2 Use the audio/video cable included with the camera to connect the camera to the television as shown in the illustration.



Make sure you connect the black plug to the camera, and the yellow plug to the television Video-in socket, and the white plug to the television Audio-in socket.

3 Insert a memory card containing image data into the camera (To insert the memory card, refer to Step 3.4 on the front side of this Quick Start Guide). Remember to press the eject button down before inserting the card.



4 Switch your television to the video channel.

- For information on how to switch the television to the video channel see the manual provided with the television.

5 Turn the camera mode dial to (playback mode) and turn the camera on.



**Important** When the camera is turned on in shooting mode (), the lens will extend. If the lens starts to extend when the lens cap is still in place, an error message will appear in the monitor. Turn the camera off and remove the lens cap before turning the camera on again.

6 When the camera is turned on, the last picture taken will be displayed on the television screen; the image is identical to the image in the camera monitor. (If the monitor is rotated to face the same direction as the lens or stowed face up on the camera body, the image in the monitor will be inverted. The image on the television screen will not be affected.) Press the multi selector down () to view photos in order, or up () to view photos in reverse order.



Step 1

## Installing the software



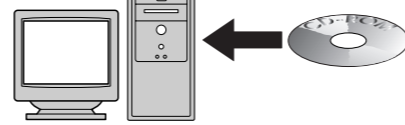
**To Users of Windows 2000 Professional, Windows XP Home Edition, and Windows XP Professional**  
When installing, uninstalling or using Nikon View 4, log on as the Administrator (Windows 2000 Professional) or Computer administrator (Windows XP Home Edition/Windows XP Professional).

### Installing Nikon View 4

To transfer pictures from the camera to the computer using the USB cable provided, it is first necessary to install Nikon View 4.

1 Turn on and start up the computer.

2 Insert the Nikon View 4 CD-ROM into the CD-ROM drive.



- To help keep track of your pictures, install the image database software included with Nikon View 4. Depending on where you purchased your camera, the COOLPIX5000 comes with Canto Cumulus (for Windows and Macintosh), iView Media Pro (for Macintosh), or FotoStation Easy (for Windows and Macintosh) image database software. If using Cumulus or iView Media Pro, they should be installed before installing Nikon View 4. If using FotoStation Easy, it should be installed after installing Nikon View 4. Note that Cumulus and iView Media Pro are not supplied to users in Europe. For further details see the Nikon View 4 Reference Manual CD-ROM, or the image database software instruction manual.

3 The Install Center welcome window will be displayed on screen.

4 Click on the Nikon View 4 button and install Nikon View 4 following the on-screen instructions.



5 When the installation is complete, leave the CD-ROM in the CD-ROM drive and restart the computer.

### Installing FotoStation Easy

\*FotoStation is only available for users in Europe.

1 Click on the Install FotoStation Easy button in the Welcome window and install FotoStation Easy according to the on-screen instructions. Installation of FotoStation Easy includes installation of QuickTime Player.

2 Once FotoStation Easy is installed, it will start up automatically whenever Nikon View 4 starts. You can also start FotoStation Easy at any time by clicking on the FotoStation Easy icon () (Macintosh) or selecting FotoStation Easy from the Program menu (Windows).

### Nikon View 4

Nikon View 4 allows you to use the computer to display pictures recorded on the camera's memory card. Nikon View 4 can also be used to transfer pictures from the memory card to the computer. Nikon View 4 cannot be used to view images after they have been transferred to the computer. To view images stored on the computer, use the image database software included with Nikon View 4 (or your own choice of image database software). Refer to the Nikon View 4 Reference Manual CD-ROM for further details.

### FotoStation Easy

FotoStation Easy is image database software, designed for use together with Nikon View 4 and your COOLPIX camera. While Nikon View 4 allows you to select and transfer pictures from your camera to your computer, FotoStation Easy allows you to organize and view your pictures after they have been transferred to your computer. This is not possible using Nikon View 4 alone. Once FotoStation Easy is installed, images transferred to the computer will automatically be displayed in the FotoStation Easy window. FotoStation Easy allows you to sort your pictures by folder, filename or text label. FotoStation Easy also allows you to enhance and resize your pictures.

### FotoShare

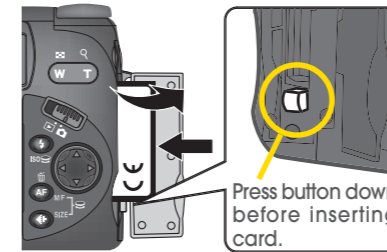
If your computer is connected to the internet you can upload pictures from FotoStation Easy to Nikon FotoShare, Nikon's on-line photo album service. You can register for FotoShare when you first start up FotoStation Easy after installation, or at anytime later using the FotoStation Easy links menu. Refer to the instruction manual provided (which is contained on the CD-ROM) for detailed instructions.

Step 2

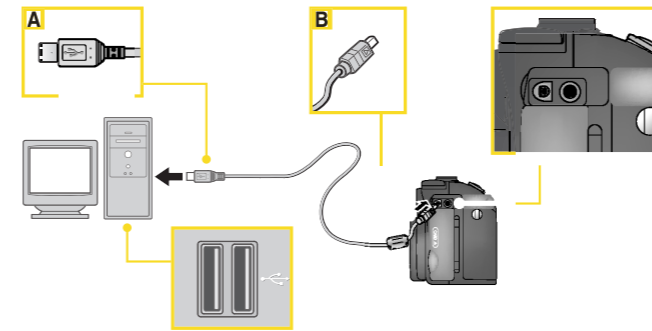
## Transferring images to the computer

### Transferring images to the computer

1 Insert a memory card containing image data into the camera (To insert the memory card, refer to Step 3.4 on the front side of this Quick Start Guide). Remember to press the eject button down before inserting the card.



2 Connect the camera to the computer using the USB interface cable. Insert the A plug into the computer's USB socket, which can be recognized by the same icon as is found on the plug. Insert the B plug into the camera's Digital I/O socket (see below).



3 Turn the camera mode dial to (playback mode) and turn the camera on.



**Important** When the camera is turned on in shooting mode () the lens will extend. If the lens starts to extend when the lens cap is still in place, an error message will appear in the monitor. Turn the camera off and remove the lens cap before turning the camera on again.

- When you turn the camera on, the camera monitor will remain blank. Nikon View 4 will automatically detect the camera; the Nikon View 4 Image Transfer (Image Xfer) window will appear on the computer screen.

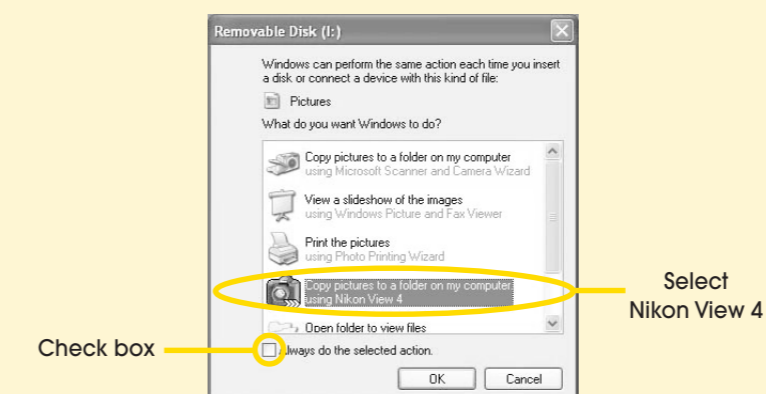
**Note** When using the COOLPIX5000 with a computer running Windows, you must "register" the camera with Windows the first time the camera is connected to the computer.

**Windows Millennium Edition (Me) / Windows 2000 Professional / Windows XP Home Edition / Windows XP Professional**  
Registration will take place automatically when the camera is connected to the computer. You may be asked to restart the computer.

**Windows 98 / Windows 98 Second Edition (SE)**  
Follow the on screen instructions to register the camera. Refer to the Nikon View 4 Reference Manual CD-ROM for further details.

### Notice for users of Windows XP Home Edition / Windows XP Professional

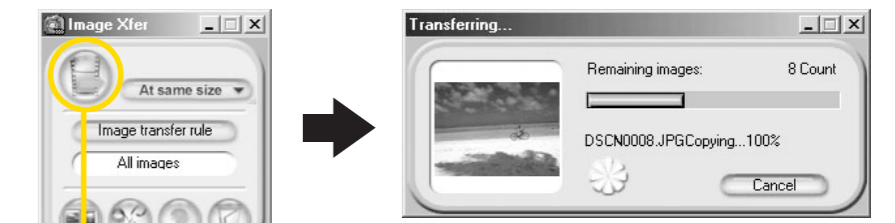
When a camera connected to the computer via a USB cable is switched on, the Removable Disk (Auto Play) window will appear on the computer screen. Select "Copy pictures to a folder on my computer using Nikon View 4", then click **OK**. Nikon View 4 will start and the Image Transfer (Image Xfer) window will appear. If the "Always do the selected action" box is checked, then Nikon View 4 will start automatically the next time the camera is connected to the computer and turned on.\*



\* Note that if the camera is reconnected to the computer via a different USB port, the Removable Disk (Auto Play) window may appear again. Either recheck the "Always do the selected action" box, or reconnect the camera using the original USB port.

4a Press the Transfer button (see below) to transfer all images to the computer. The progress indicator (see below) will be appear, indicating that the images are being transferred to the computer.

- If image database software is installed in the computer together with Nikon View 4, then both Nikon View 4 and the image database software will start up when images are transferred to the computer.

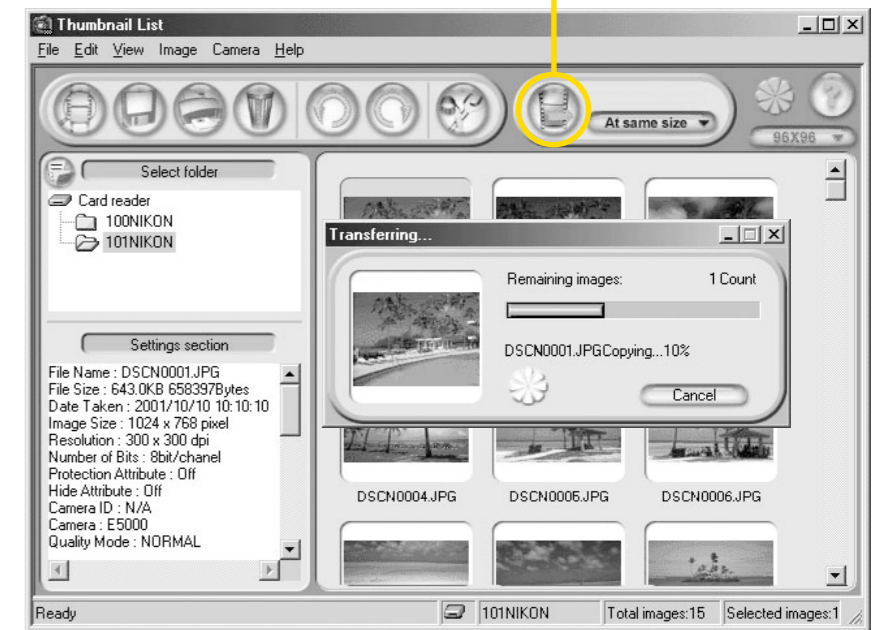


Transfer button

4b If you want to transfer only selected images to the computer, click the Thumbnail button (see right) to display the Thumbnail List window. Select the desired images and click the Transfer button; the progress indicator (see below) will appear, indicating that the images are being transferred to the computer. Refer to the Nikon View 4 Reference Manual CD-ROM for further details.



Thumbnail button



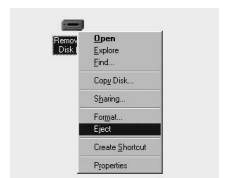
5 The images recorded on the memory card have now been transferred to the computer. When you want to disconnect the camera from the computer, follow the instructions below **before turning the camera off and disconnecting the USB interface cable**.

- Disconnect the camera from the computer.

**Windows Millennium Edition (Me) / Windows 2000 Professional / Windows XP Home Edition / Windows XP Professional**  
Click the "Unplug or eject hardware" button and select Stop USB Disk from the menu that appears.



**Windows 98 / Windows 98 Second Edition (SE)**  
Double click the My Computer icon, and right click the removable disk corresponding to the camera. Select Eject from the menu that appears.



### Macintosh

Drag the unfitted icon on the desktop (which represents the camera) to the Trash.

